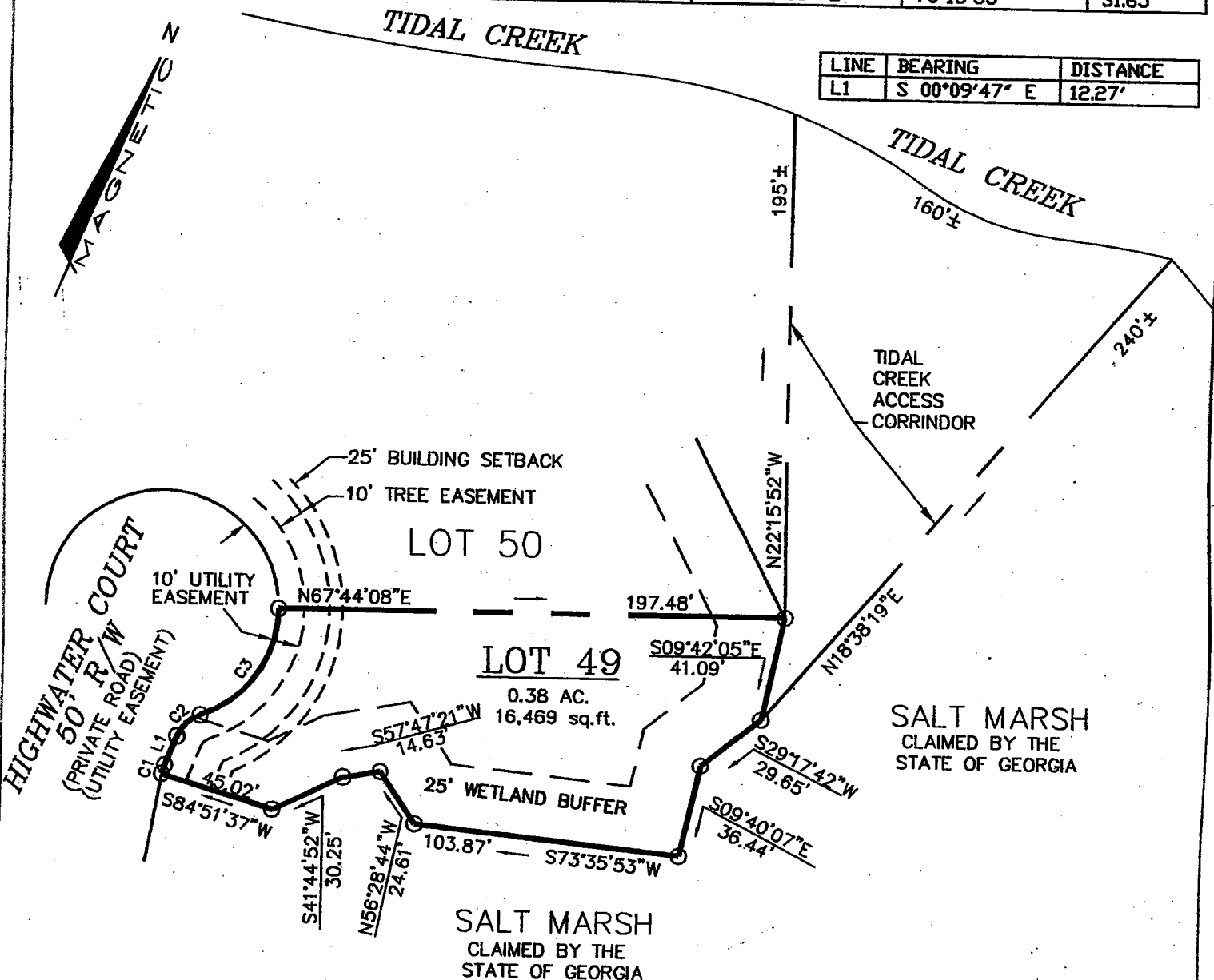


CURVE	RADIUS	ARC LENGTH	CHORD LEN	CHORD BEARING	DELTA ANGLE	TANGENT
C1	30.00'	3.50'	3.50'	N 03°30'11" W	06°41'04"	1.75'
C2	15.00'	12.60'	12.23'	N 23°54'12" E	48°07'42"	6.70'
C3	45.00'	55.16'	51.77'	N 12°51'05" E	70°13'55"	31.65'

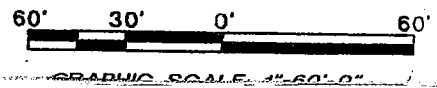
LINE	BEARING	DISTANCE
L1	S 00°09'47" E	12.27'



A PLAT OF LOT 49 AND TIDAL CREEK  
ACCESS CORRIDOR, BETZ CREEK, PHASE 6C  
5th G.M. DISTRICT, WILMINGTON ISLAND,  
CHATHAM COUNTY, STATE OF GEORGIA

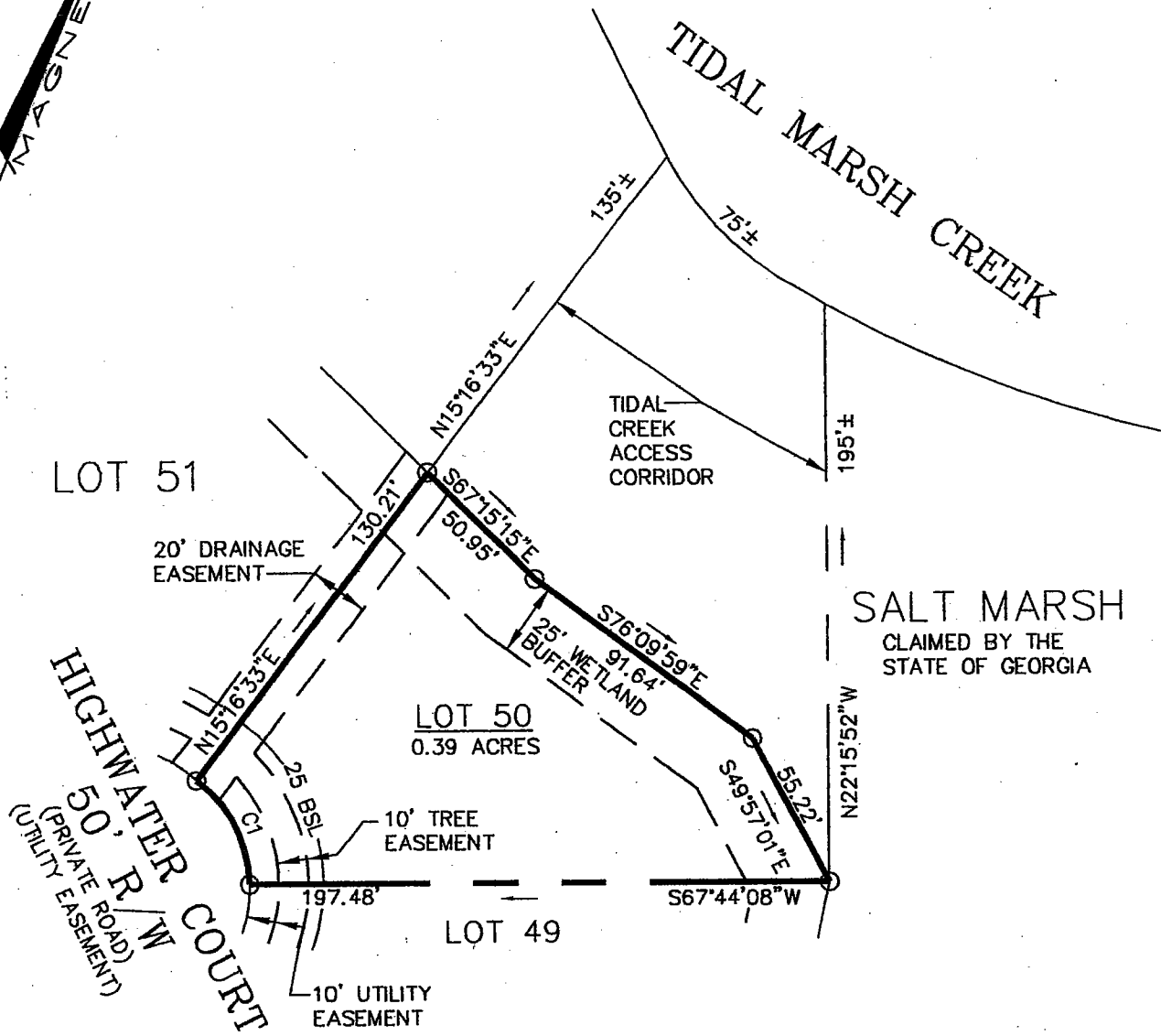
**REFERENCE:**

1. PLAT BY: STEVENSON & PALMER  
ENTITLED: BETZ CREEK, PHASE 6C
2. CHATHAM COUNTY TAX MAPS.



**HIGHWATER<sup>4</sup>COURT**

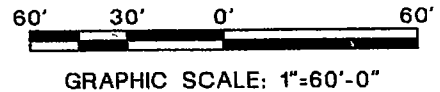
CURVE TABLE						
CURVE	LENGTH	RADIUS	TANGENT	DELTA	BEARING	CHORD
C1	41.20	45.00	22.17	52°27'13"	N48°30'01"W	39.77



A PLAT OF LOT 50 AND TIDAL CREEK ACCESS CORRIDOR, BETZ CREEK, PHASE 6C  
 5th G.M. DISTRICT, WILMINGTON ISLAND,  
 CHATHAM COUNTY, STATE OF GEORGIA

REFERENCE:

1. PLAT BY: STEVENSON & PALMER  
 ENTITLED: BETZ CREEK, PHASE 6C
2. CHATHAM COUNTY TAX MAPS.



6  
 HIGHWATER  
 COURT